

GEARBOX MAINTENANCE

IL03

Acquiring knowledge through training is the key to gear drive Longevity. Maintenance team with adequate “know-how” knowledge will drastically improve a gearbox service life.

COURSE OBJECTIVE

This course will provide the participant with the knowledge needed to properly maintain, service, inspect and repair a variety of Industrial gearboxes. The course will allow the participant to learn gearing terminology, to properly “set” the gears and “preload” the bearings and proper lubricant selection for maximum life expectancy. Correct methodology for bearings, seals and gears replacement is included as well in the course.

BENEFITS

- Prolong the service life of equipments
- Lower cost of operation in long run
- Increase production capacity
- Increase product quality

WHO SHOULD ATTEND

- Industrial users
- Maintenance mechanics
- Maintenance managers
- Shop foremen & supervisors

PRE-REQUISITE

No pre-requisite is required. Participants with basic knowledge of bearings or attended our course EL01 is an advantage.

COURSE MATERIALS

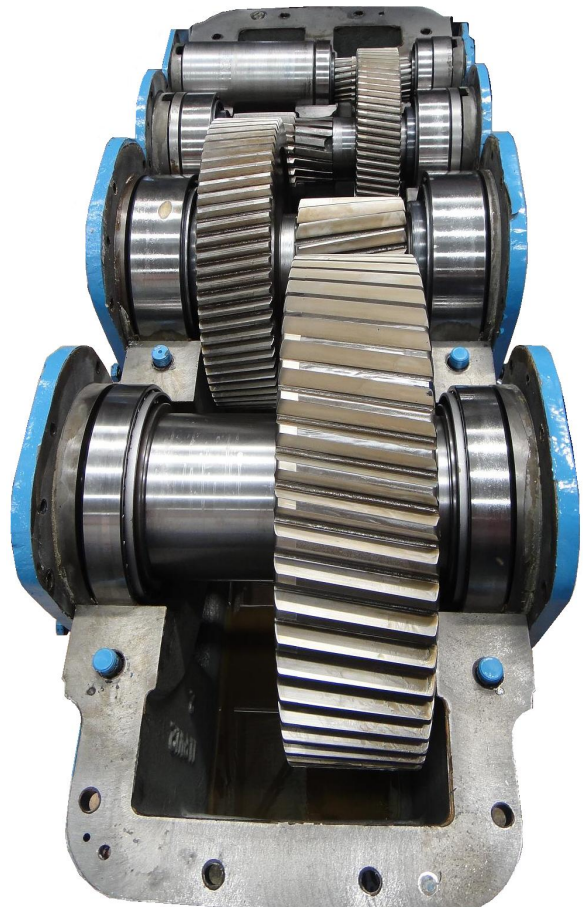
Comprehensive notes and sharing of gearbox overhauling procedures are included in this training.

COURSE DURATION

2 DAYS

CANCELLATION POLICY

If notice of withdrawal is given in writing - 14 calendar days before the course date, 80% of the course fee will be refunded. A 50% refund will be made for cancellation received in writing – 7 calendar days before the course date. After which, NO REFUND will be entertained.



Gearbox with top cover opened

MULTI MAINTENANCE SOLUTION

WE DELIVER CUSTOMIZE SOLUTION TO YOU

COURSE TOPICS

Lesson 1

Gearing Basic

- Functions of gear
- Types of gear
- Fundamental of gear
- Gear terminology
- Materials & heat treatment
- Accuracy & strength

Lesson 2

Types of Gearbox

- Geared motor
- Concentric drive
- Worm gear
- Shaft mounted gearbox
- Parallel shaft gearbox
- Right angle gearbox
- Planetary gearbox
- Mixer drive

Lesson 3

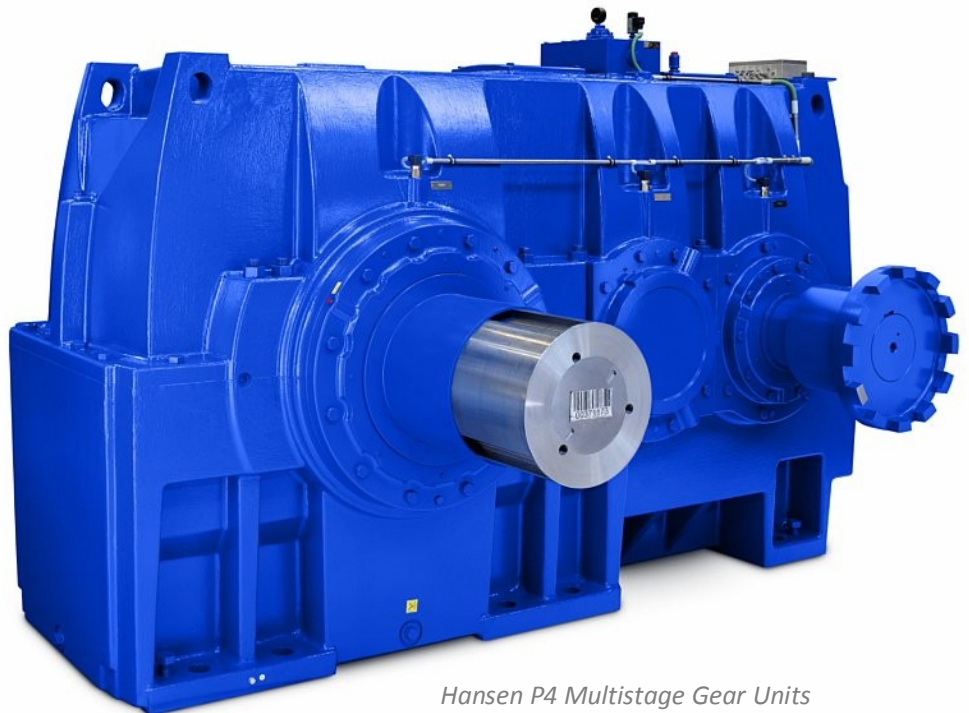
Gear Failure Modes

- Surface fatigue
- Wear
- Plastic flow
- Breakage

Lesson 4

Gearbox Overhauling Procedures

- Dismantling and cleaning
- Preliminary inspection
- Top gearbox cover removal
- Bearings dismounting procedures
- Evaluation on shaft & housing fittings
- Evaluate gear tooth and contact
- Bearing installation
- Gear installation
- End play and backlash setting
- Assembling gearbox top cover



Hansen P4 Multistage Gear Units

MULTI MAINTENANCE SOLUTION

WE DELIVER CUSTOMIZE SOLUTION TO YOU

REGISTRATION

SIGN UP
NOW!



1ST Delegate Name: _____
Job Title / Department: _____
Telephone: _____ Fax: _____
Email: _____

2ND Delegate Name: _____
Job Title / Department: _____
Telephone: _____ Fax: _____
Email: _____

3RD Delegate Name: _____
Job Title / Department: _____
Telephone: _____ Fax: _____
Email: _____

APPROVED BY: _____

Job Title / Department: _____
Telephone: _____ Fax: _____
Email: _____
Company: _____
Address: _____

2 easy ways to Register



(603) 4047 3465

Complete and fax this registration form



info@m2solution.com.my

MULTI MAINTENANCE SOLUTION

WE DELIVER CUSTOMIZE SOLUTION TO YOU